



測試報告 Test Report

號碼(No.) : CY/2014/B0038

日期(Date) : 2014/11/12 頁數(Page): 3 of 12

盛進貿易股份有限公司

SHENG CHIN TRADING CO., LTD.

台北市開封街2段26號

NO. 26, SEC. 2, KAI FONG ST., TAIPEI, TAIWAN, R. O. C.



測試項目 (Test Items)	單位 (Unit)	測試方法 (Method)	方法偵測 極限值 (MDL)	結果 (Result)
				No.1
硒 / Selenium (Se)	mg/kg	參考US EPA 3052方法, 以感應耦合電漿原子發射光譜儀檢測。 / With reference to US EPA Method 3052. Analysis was performed by ICP-AES.	2	n.d.
甲醛 / Formaldehyde (CAS No.: 50-00-0)	mg/kg	參考ISO 17226-1(2008)方法, 以高效液相層析儀/二極體陣列偵測器檢測。 / With reference to ISO 17226-1(2008). Analysis was performed by HPLC/DAD.	3	n.d.
二甲苯 / Xylene	mg/kg	參考US EPA 5021方法, 以氣相層析/質譜儀檢測。 / With reference to US EPA 5021 method. Analysis was performed by GC/MS.	1	n.d.
揮發性有機物質 (VOCs) / Volatile organic compounds (VOCs)				
1,1,1,2-四氯乙烷 / 1,1,1,2-Tetrachloroethane (CAS No.: 630-20-6)	mg/kg	參考US EPA 5021方法, 以氣相層析/質譜儀檢測。 / With reference to US EPA 5021 method. Analysis was performed by GC/MS.	1	n.d.
1,1,1-三氯乙烷 / 1,1,1-Trichloroethane (CAS No.: 71-55-6)	mg/kg	參考US EPA 5021方法, 以氣相層析/質譜儀檢測。 / With reference to US EPA 5021 method. Analysis was performed by GC/MS.	1	n.d.
1,1,2,2-四氯乙烷 / 1,1,2,2-Tetrachloroethane (CAS No.: 79-34-5)	mg/kg	參考US EPA 5021方法, 以氣相層析/質譜儀檢測。 / With reference to US EPA 5021 method. Analysis was performed by GC/MS.	1	n.d.
1,1,2-三氯乙烷 / 1,1,2-Trichloroethane (CAS No.: 79-00-5)	mg/kg	參考US EPA 5021方法, 以氣相層析/質譜儀檢測。 / With reference to US EPA 5021 method. Analysis was performed by GC/MS.	1	n.d.

This document is issued by the Company subject to its General Conditions of Service printed overleaf, available on request or accessible at <http://www.sgs.com/en/Terms-and-Conditions.aspx> and, for electronic format documents, subject to terms and conditions available at <http://www.sgs.com/en/Terms-and-Conditions/Terms-e-Document.aspx>. Attention is drawn to the limitation of liability, indemnification and jurisdiction issues defined therein. The information reflected hereon reflects the Company's findings at the time of its intervention only and within the limits of Client's instructions, if any. The Company's sole responsibility is to its Client and this document does not exonerate parties to a transaction from exercising all their rights and obligations under the transaction documents. This document cannot be reproduced except in full, without prior written approval of the Company. Any unauthorized alteration, forgery or falsification of the content or appearance of this document is unlawful and offenders may be prosecuted to the fullest extent of the law. Unless otherwise stated the results shown in this test report refer only to the sample(s) tested.



測試報告

Test Report

號碼(No.) : CY/2014/B0038

日期(Date) : 2014/11/12

頁數(Page): 4 of 12



盛進貿易股份有限公司

SHENG CHIN TRADING CO., LTD.

台北市開封街2段26號

NO. 26, SEC. 2, KAI FONG ST., TAIPEI, TAIWAN, R. O. C.

測試項目 (Test Items)	單位 (Unit)	測試方法 (Method)	方法偵測 極限值 (MDL)	結果 (Result)
				No.1
1,1-二氯乙烯 / 1,1-Dichloroethene (CAS No.: 75-35-4)	mg/kg	參考US EPA 5021方法, 以氣相層析/質譜儀檢測. / With reference to US EPA 5021 method. Analysis was performed by GC/MS.	1	n.d.
1,1-二氯乙烷 / 1,1-Dichloroethane (CAS No.: 75-34-3)	mg/kg	參考US EPA 5021方法, 以氣相層析/質譜儀檢測. / With reference to US EPA 5021 method. Analysis was performed by GC/MS.	1	n.d.
1,1-二氯丙烯 / 1,1-Dichloropropene (CAS No.: 563-58-6)	mg/kg	參考US EPA 5021方法, 以氣相層析/質譜儀檢測. / With reference to US EPA 5021 method. Analysis was performed by GC/MS.	1	n.d.
1,2,3-三氯苯 / 1,2,3-Trichlorobenzene (CAS No.: 87-61-6)	mg/kg	參考US EPA 5021方法, 以氣相層析/質譜儀檢測. / With reference to US EPA 5021 method. Analysis was performed by GC/MS.	1	n.d.
1,2,3-三氯丙烷 / 1,2,3-Trichloropropane (CAS No.: 96-18-4)	mg/kg	參考US EPA 5021方法, 以氣相層析/質譜儀檢測. / With reference to US EPA 5021 method. Analysis was performed by GC/MS.	1	n.d.
1,2,4-三氯苯 / 1,2,4-Trichlorobenzene (CAS No.: 120-82-1)	mg/kg	參考US EPA 5021方法, 以氣相層析/質譜儀檢測. / With reference to US EPA 5021 method. Analysis was performed by GC/MS.	1	n.d.
1,2,4-三甲基苯 / 1,2,4-Trimethylbenzene (CAS No.: 95-63-6)	mg/kg	參考US EPA 5021方法, 以氣相層析/質譜儀檢測. / With reference to US EPA 5021 method. Analysis was performed by GC/MS.	1	n.d.

This document is issued by the Company subject to its General Conditions of Service printed overleaf, available on request or accessible at <http://www.sgs.com/en/Terms-and-Conditions.aspx> and, for electronic format documents, subject to Terms and Conditions for Electronic Documents at <http://www.sgs.com/en/Terms-and-Conditions/Terms-e-Documents.aspx>. Attention is drawn to the limitation of liability, indemnification and jurisdiction issues defined therein. Any holder of this document is advised that information contained hereon reflects the Company's findings at the time of its intervention only and within the limits of Client's instructions, if any. The Company's sole responsibility is to its Client and this document does not exonerate parties to a transaction from exercising all their rights and obligations under the transaction documents. This document cannot be reproduced except in full, without prior written approval of the Company. Any unauthorized alteration, forgery or falsification of the content or appearance of this document is unlawful and offenders may be prosecuted to the fullest extent of the law. Unless otherwise stated the results shown in this test report refer only to the sample(s) tested.

TWB 4800413



THE *Journal of the* **ACADEMY OF MANAGEMENT** *Publication* **FOR** *MANAGEMENT*

Abstract The purpose of this study was to determine whether there were differences in the prevalence of risk factors for coronary artery disease between two groups of men who had been exposed to asbestos during their working lives. One group consisted of 60 men who had worked in asbestos-related occupations and the other group consisted of 60 men who had never worked in such occupations. The prevalence of risk factors for coronary artery disease was determined by means of a questionnaire and physical examination. The results showed that the prevalence of risk factors for coronary artery disease was significantly higher in the group of men who had worked in asbestos-related occupations than in the group of men who had never worked in such occupations.

1998, 1999, 2000, 2001, 2002, 2003, 2004, 2005, 2006, 2007, 2008, 2009, 2010, 2011, 2012, 2013, 2014, 2015, 2016, 2017, 2018, 2019, 2020, 2021, 2022, 2023, 2024, 2025, 2026, 2027, 2028, 2029, 2030, 2031, 2032, 2033, 2034, 2035, 2036, 2037, 2038, 2039, 2040, 2041, 2042, 2043, 2044, 2045, 2046, 2047, 2048, 2049, 2050, 2051, 2052, 2053, 2054, 2055, 2056, 2057, 2058, 2059, 2060, 2061, 2062, 2063, 2064, 2065, 2066, 2067, 2068, 2069, 2070, 2071, 2072, 2073, 2074, 2075, 2076, 2077, 2078, 2079, 2080, 2081, 2082, 2083, 2084, 2085, 2086, 2087, 2088, 2089, 2090, 2091, 2092, 2093, 2094, 2095, 2096, 2097, 2098, 2099, 2100, 2101, 2102, 2103, 2104, 2105, 2106, 2107, 2108, 2109, 2110, 2111, 2112, 2113, 2114, 2115, 2116, 2117, 2118, 2119, 2120, 2121, 2122, 2123, 2124, 2125, 2126, 2127, 2128, 2129, 2130, 2131, 2132, 2133, 2134, 2135, 2136, 2137, 2138, 2139, 2140, 2141, 2142, 2143, 2144, 2145, 2146, 2147, 2148, 2149, 2150, 2151, 2152, 2153, 2154, 2155, 2156, 2157, 2158, 2159, 2160, 2161, 2162, 2163, 2164, 2165, 2166, 2167, 2168, 2169, 2170, 2171, 2172, 2173, 2174, 2175, 2176, 2177, 2178, 2179, 2180, 2181, 2182, 2183, 2184, 2185, 2186, 2187, 2188, 2189, 2190, 2191, 2192, 2193, 2194, 2195, 2196, 2197, 2198, 2199, 2200, 2201, 2202, 2203, 2204, 2205, 2206, 2207, 2208, 2209, 2210, 2211, 2212, 2213, 2214, 2215, 2216, 2217, 2218, 2219, 2220, 2221, 2222, 2223, 2224, 2225, 2226, 2227, 2228, 2229, 2230, 2231, 2232, 2233, 2234, 2235, 2236, 2237, 2238, 2239, 2240, 2241, 2242, 2243, 2244, 2245, 2246, 2247, 2248, 2249, 2250, 2251, 2252, 2253, 2254, 2255, 2256, 2257, 2258, 2259, 2260, 2261, 2262, 2263, 2264, 2265, 2266, 2267, 2268, 2269, 2270, 2271, 2272, 2273, 2274, 2275, 2276, 2277, 2278, 2279, 2280, 2281, 2282, 2283, 2284, 2285, 2286, 2287, 2288, 2289, 2290, 2291, 2292, 2293, 2294, 2295, 2296, 2297, 2298, 2299, 2300, 2301, 2302, 2303, 2304, 2305, 2306, 2307, 2308, 2309, 2310, 2311, 2312, 2313, 2314, 2315, 2316, 2317, 2318, 2319, 2320, 2321, 2322, 2323, 2324, 2325, 2326, 2327, 2328, 2329, 2330, 2331, 2332, 2333, 2334, 2335, 2336, 2337, 2338, 2339, 2340, 2341, 2342, 2343, 2344, 2345, 2346, 2347, 2348, 2349, 2350, 2351, 2352, 2353, 2354, 2355, 2356, 2357, 2358, 2359, 2360, 2361, 2362, 2363, 2364, 2365, 2366, 2367, 2368, 2369, 2370, 2371, 2372, 2373, 2374, 2375, 2376, 2377, 2378, 2379, 2380, 2381, 2382, 2383, 2384, 2385, 2386, 2387, 2388, 2389, 2390, 2391, 2392, 2393, 2394, 2395, 2396, 2397, 2398, 2399, 2400, 2401, 2402, 2403, 2404, 2405, 2406, 2407, 2408, 2409, 2410, 2411, 2412, 2413, 2414, 2415, 2416, 2417, 2418, 2419, 2420, 2421, 2422, 2423, 2424, 2425, 2426, 2427, 2428, 2429, 2430, 2431, 2432, 2433, 2434, 2435, 2436, 2437, 2438, 2439, 2440, 2441, 2442, 2443, 2444, 2445, 2446, 2447, 2448, 2449, 2450, 2451, 2452, 2453, 2454, 2455, 2456, 2457, 2458, 2459, 2460, 2461, 2462, 2463, 2464, 2465, 2466, 2467, 2468, 2469, 2470, 2471, 2472, 2473, 2474, 2475, 2476, 2477, 2478, 2479, 2480, 2481, 2482, 2483, 2484, 2485, 2486, 2487, 2488, 2489, 2490, 2491, 2492, 2493, 2494, 2495, 2496, 2497, 2498, 2499, 2500, 2501, 2502, 2503, 2504, 2505, 2506, 2507, 2508, 2509, 2510, 2511, 2512, 2513, 2514, 2515, 2516, 2517, 2518, 2519, 2520, 2521, 2522, 2523, 2524, 2525, 2526, 2527, 2528, 2529, 2530, 2531, 2532, 2533, 2534, 2535, 2536, 2537, 2538, 2539, 2540, 2541, 2542, 2543, 2544, 2545, 2546, 2547, 2548, 2549, 2550, 2551, 2552, 2553, 2554, 2555, 2556, 2557, 2558, 2559, 2560, 2561, 2562, 2563, 2564, 2565, 2566, 2567, 2568, 2569, 2570, 2571, 2572, 2573, 2574, 2575, 2576, 2577, 2578, 2579, 2580, 2581, 2582, 2583, 2584, 2585, 2586, 2587, 2588, 2589, 2590, 2591, 2592, 2593, 2594, 2595, 2596, 2597, 2598, 2599, 2600, 2601, 2602, 2603, 2604, 2605, 2606, 2607, 2608, 2609, 2610, 2611, 2612, 2613, 2614, 2615, 2616, 2617, 2618, 2619, 2620, 2621, 2622, 2623, 2624, 2625, 2626, 2627, 2628, 2629, 2630, 2631, 2632, 2633, 2634, 2635, 2636, 2637, 2638, 2639, 2640, 2641, 2642, 2643, 2644, 2645, 2646, 2647, 2648, 2649, 2650, 2651, 2652, 2653, 2654, 2655, 2656, 2657, 2658, 2659, 2660, 2661, 2662, 2663, 2664, 2665, 2666, 2667, 2668, 2669, 2670, 2671, 2672, 2673, 2674, 2675, 2676, 2677, 2678, 2679, 26

[illegible]

Age Group	Percentage
18-24	10
25-34	35
35-44	25
45-54	15
55-64	10
65-74	5
75-84	2
85+	1



This document is issued by the Company subject to its General Conditions of Contract printed at <http://www.sgs.com/en/Terms-and-Conditions.aspx> and, for electronic format documents, subject to Terms and Conditions for Electronic Documents at <http://www.sgs.com/en/Terms-and-Conditions/Terms-e-Documents.aspx>. Attention is drawn to the limitation of liability, indemnification and jurisdiction issues defined therein. Any holder of this document is advised that information contained hereon reflects the Company's findings at the time of its intervention only and within the limits of Client's instructions, if any. The Company's sole responsibility is to its Client and this document does not exonerate parties to a transaction from exercising all their rights and obligations under the transaction documents. This document cannot be reproduced except in full, without prior written approval of the Company. Any unauthorized alteration, forgery or falsification of the content or appearance of this document is unlawful and offenders may be prosecuted to the fullest extent of the law. Unless otherwise stated the results shown in this test report refer only to the sample(s) tested.

SGS Taiwan Ltd.
台灣檢驗科技股份有限公司

33, Wu Chuan Rd., New Taipei Industrial Park, New Taipei City, Taiwan / 新北市新北產業園區五權路33號
 ☎ (886-2) 2299-3939 ☎ (886-2) 2299-3237 www.sgs.tw

f (886-2) 2299-3237

www.sqs.tw

Member of SGS Group

TWB 4800414

1001



測試報告

Test Report

號碼(No.) : CY/2014/B0038

日期(Date) : 2014/11/12 頁數(Page): 6 of 12

盛進貿易股份有限公司

SHENG CHIN TRADING CO., LTD.

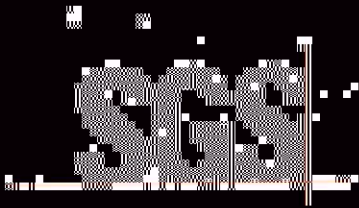
台北市開封街2段26號

NO. 26, SEC. 2, KAI FONG ST., TAIPEI, TAIWAN, R. O. C.



測試項目 (Test Items)	單位 (Unit)	測試方法 (Method)	方法偵測 極限值 (MDL)	結果 (Result)
				Nr. 011
1,3-二氯丙烷 / 1,3-Dichloropropane (CAS No.: 142-28-9)	mg/kg	參考US EPA 5021方法, 以氣相層析/質譜儀檢測. / With reference to US EPA 5021 method. Analysis was performed by GC/MS.	1	n.d.
1,4-二氯苯 / 1,4-Dichlorobenzene (CAS No.: 106-46-7)	mg/kg	參考US EPA 5021方法, 以氣相層析/質譜儀檢測. / With reference to US EPA 5021 method. Analysis was performed by GC/MS.	1	n.d.
2,2,2-三氯丙烷 / 2,2,2-Trichloropropane (CAS No.: 594-20-7)	mg/kg	參考US EPA 5021方法, 以氣相層析/質譜儀檢測. / With reference to US EPA 5021 method. Analysis was performed by GC/MS.	1	n.d.
2-氯甲苯 / 2-Chlorotoluene (CAS No.: 95-49-8)	mg/kg	參考US EPA 5021方法, 以氣相層析/質譜儀檢測. / With reference to US EPA 5021 method. Analysis was performed by GC/MS.	1	n.d.
4-氯甲苯 / 4-Chlorotoluene (CAS No.: 106-43-4)	mg/kg	參考US EPA 5021方法, 以氣相層析/質譜儀檢測. / With reference to US EPA 5021 method. Analysis was performed by GC/MS.	1	n.d.
苯 / Benzene (CAS No.: 71-43-2)	mg/kg	參考US EPA 5021方法, 以氣相層析/質譜儀檢測. / With reference to US EPA 5021 method. Analysis was performed by GC/MS.	1	n.d.
溴苯 / Bromobenzene (CAS No.: 108-86-1)	mg/kg	參考US EPA 5021方法, 以氣相層析/質譜儀檢測. / With reference to US EPA 5021 method. Analysis was performed by GC/MS.	1	n.d.

This document is issued by the Company subject to its General Conditions of Service printed overleaf, available on request or accessible at <http://www.sgs.com/en/Terms-and-Conditions.aspx> and, for electronic format documents, subject to Terms and Conditions for Electronic Documents at <http://www.sgs.com/en/Terms-and-Conditions/Terms-e-Document.aspx>. Attention is drawn to the limitation of liability, indemnification and jurisdiction issues defined therein. Any holder of this document is advised that information contained hereon reflects the Company's findings at the time of its intervention only and within the limits of Client's instructions, if any. The Company's sole responsibility is to its Client and this document does not exonerate parties to a transaction from exercising all their rights and obligations under the transaction documents. This document cannot be reproduced except in full, without prior written approval of the Company. Any unauthorized alteration, forgery or falsification of the content or appearance of this document is unlawful and offenders may be prosecuted to the fullest extent of the law. Unless otherwise stated the results shown in this test report refer only to the sample(s) tested.



號碼(No.) : CY/2014/B0038 日期(Date) : 2014/11/12 頁數(Page): 7 of 12

Test Report

盛進貿易股份有限公司
SHENG CHIN TRADING CO., LTD.

台北市開封街2段26號

NO. 26, SEC. 2, KAI FONG ST., TAIPEI, TAIWAN, R. O. C.



測試項目 (Test Items)	單位 (Unit)	測試方法 (Method)	方法偵測 極限值 (MDL)	結果 (Result)
				No.1
溴氯甲烷 / Bromochloromethane (CAS No.: 74-97-5)	mg/kg	參考US EPA 5021方法, 以氣相層析/質譜儀檢測. / With reference to US EPA 5021 method. Analysis was performed by GC/MS.	1	n.d.
一溴二氯甲烷 / Bromodichloromethane (CAS No.: 75-27-4)	mg/kg	參考US EPA 5021方法, 以氣相層析/質譜儀檢測. / With reference to US EPA 5021 method. Analysis was performed by GC/MS.	1	n.d.
溴仿 / Bromoform (CAS No.: 75-25-2)	mg/kg	參考US EPA 5021方法, 以氣相層析/質譜儀檢測. / With reference to US EPA 5021 method. Analysis was performed by GC/MS.	1	n.d.
溴甲烷 / Bromomethane (CAS No.: 74-83-9)	mg/kg	參考US EPA 5021方法, 以氣相層析/質譜儀檢測. / With reference to US EPA 5021 method. Analysis was performed by GC/MS.	1	n.d.
四氯甲烷 (四氯化碳) / Carbon tetrachloride (CAS No.: 56-23-5)	mg/kg	參考US EPA 5021方法, 以氣相層析/質譜儀檢測. / With reference to US EPA 5021 method. Analysis was performed by GC/MS.	1	n.d.
氯苯 / Chlorobenzene (CAS No.: 108-90-7)	mg/kg	參考US EPA 5021方法, 以氣相層析/質譜儀檢測. / With reference to US EPA 5021 method. Analysis was performed by GC/MS.	1	n.d.
氯乙烷 / Chloroethane (CAS No.: 75-00-3)	mg/kg	參考US EPA 5021方法, 以氣相層析/質譜儀檢測. / With reference to US EPA 5021 method. Analysis was performed by GC/MS.	1	n.d.

This document is issued by the Company subject to its General Conditions of Service printed overleaf, available on request or accessible at <http://www.sgs.com/en/Terms-and-Conditions.aspx> and, for electronic format documents, subject to Terms and Conditions for Electronic Documents at <http://www.sgs.com/en/Terms-and-Conditions/Terms-e-Documents.aspx>. Attention is drawn to the limitation of liability, indemnification and jurisdiction issues defined therein. Any holder of this document is advised that information contained hereon reflects the Company's findings at the time of its intervention only and within the limits of Client's instructions, if any. The Company's sole responsibility is to its Client and this document does not exonerate parties to a transaction from exercising all their rights and obligations under the transaction documents. This document cannot be reproduced except in full, without prior written approval of the Company. Any unauthorized alteration, forgery or falsification of the content or appearance of this document is unlawful and offenders may be prosecuted to the fullest extent of the law. Unless otherwise stated the results shown in this test report refer only to the sample(s) tested.

SGS Taiwan Ltd.
台灣檢驗科技股份有限公司

33, Wu Chuan Rd., New Taipei Industrial Park, New Taipei City, Taiwan / 新北市新北產業園區五權路33號
t (886-2) 2299-3939 f (886-2) 2299-3237

www.sgs.tw

Member of SGS Group

TWB 4800416

1001



測試報告

Test Report

盛進貿易股份有限公司

SHENG CHIN TRADING CO., LTD.

台北市開封街2段26號

NO. 26, SEC. 2, KAI FONG ST., TAIPEI, TAIWAN. R. O. C.

號碼(No.) : CY/2014/B0038

日期(Date) : 2014/11/12 頁數(Page): 8 of 12



測試項目 (Test Items)	單位 (Unit)	測試方法 (Method)	方法偵測 極限值 (MDL)	結果 (Result)
				No.1
氯仿 / Chloroform (CAS No.: 67-66-3)	mg/kg	參考US EPA 5021方法, 以氣相層析/質譜儀檢測. / With reference to US EPA 5021 method. Analysis was performed by GC/MS.	1	n.d.
氯甲烷 / Chloromethane (CAS No.: 74-87-3)	mg/kg	參考US EPA 5021方法, 以氣相層析/質譜儀檢測. / With reference to US EPA 5021 method. Analysis was performed by GC/MS.	1	n.d.
順-1,2-二氯乙烯 / cis-1,2-Dichloroethene (CAS No.: 156-59-2)	mg/kg	參考US EPA 5021方法, 以氣相層析/質譜儀檢測. / With reference to US	1	n.d.

		EPA 5021 method. Analysis was performed by GC/MS.		
順-1,3-二氯丙烯 / cis-1,3-Dichloropropene (CAS No.: 10061-01-5)	mg/kg	參考US EPA 5021方法, 以氣相層析/質譜儀檢測. / With reference to US EPA 5021 method. Analysis was performed by GC/MS.	1	n.d.
一氯二溴甲烷 / Dibromochloromethane (CAS No.: 124-48-1)	mg/kg	參考US EPA 5021方法, 以氣相層析/質譜儀檢測. / With reference to US EPA 5021 method. Analysis was performed by GC/MS.	1	n.d.
二溴甲烷 / Dibromomethane (CAS No.: 74-95-3)	mg/kg	參考US EPA 5021方法, 以氣相層析/質譜儀檢測. / With reference to US EPA 5021 method. Analysis was performed by GC/MS.	1	n.d.
二氯二氟甲烷 / Dichlorodifluoromethane (CAS No.: 75-71-8)	mg/kg	參考US EPA 5021方法, 以氣相層析/質譜儀檢測. / With reference to US EPA 5021 method. Analysis was performed by GC/MS.	1	n.d.

This document is issued by the Company subject to its General Conditions of Service printed overleaf, available on request or accessible at <http://www.sgs.com/en/Terms-and-Conditions.aspx> and, for electronic format documents, subject to Terms and Conditions for Electronic Documents at <http://www.sgs.com/en/Terms-and-Conditions/Terms-e-Document.aspx>. Attention is drawn to the limitation of liability, indemnification and jurisdiction issues defined therein. Any holder of this document is advised that information contained hereon reflects the Company's findings at the time of its intervention only and within the limits of Client's instructions, if any. The Company's sole responsibility is to its Client and this document does not exonerate parties to a transaction from exercising all their rights and obligations under the transaction documents. This document cannot be reproduced except in full, without prior written approval of the Company. Any unauthorized alteration, forgery or falsification of the content or appearance of this document is unlawful and offenders may be prosecuted to the fullest extent of the law. Unless otherwise stated the results shown in this test report refer only to the sample(s) tested.

測試報告

Test Report

號碼(No.) : CY/2014/B0038

日期(Date) : 2014/11/12

頁數(Page): 9 of 12



盛進貿易股份有限公司

SHENG CHIN TRADING CO., LTD.

台北市開封街2段26號

NO. 26, SEC. 2, KAI FONG ST., TAIPEI, TAIWAN, R. O. C.

測試項目 (Test Items)	單位 (Unit)	測試方法 (Method)	方法偵測 極限值 (MDL)	結果 (Result)
				No.1
乙苯 / Ethylbenzene (CAS No.: 100-41-4)	mg/kg	參考US EPA 5021方法, 以氣相層析/質譜儀檢測. / With reference to US EPA 5021 method. Analysis was performed by GC/MS.	1	n.d.
六氯丁二烯 / Hexachlorobutadiene (CAS No.: 87-68-3)	mg/kg	參考US EPA 5021方法, 以氣相層析/質譜儀檢測. / With reference to US EPA 5021 method. Analysis was performed by GC/MS.	1	n.d.
異丙基苯 / Isopropylbenzene (CAS No.: 98-82-8)	mg/kg	參考US EPA 5021方法, 以氣相層析/質譜儀檢測. / With reference to US EPA 5021 method. Analysis was performed by GC/MS.	1	n.d.
二氯甲烷 / Dichloromethane (CAS No.: 75-09-2)	mg/kg	參考US EPA 5021方法, 以氣相層析/質譜儀檢測. / With reference to US EPA 5021 method. Analysis was performed by GC/MS.	1	n.d.
萘 / Naphthalene (CAS No.: 91-20-3)	mg/kg	參考US EPA 5021方法, 以氣相層析/質譜儀檢測. / With reference to US EPA 5021 method. Analysis was performed by GC/MS.	1	n.d.
正丁基苯 / n-Butylbenzene (CAS No.: 104-51-8)	mg/kg	參考US EPA 5021方法, 以氣相層析/質譜儀檢測. / With reference to US EPA 5021 method. Analysis was performed by GC/MS.	1	n.d.
正丙基苯 / n-Propylbenzene (CAS No.: 103-65-1)	mg/kg	參考US EPA 5021方法, 以氣相層析/質譜儀檢測. / With reference to US EPA 5021 method. Analysis was performed by GC/MS.	1	n.d.

This document is issued by the Company subject to its General Conditions of Service, printed overleaf, available on request or accessible at <http://www.sgs.com/en/Terms-and-Conditions.aspx> and, for electronic format documents, subject to Terms and Conditions for Electronic Documents at <http://www.sgs.com/en/Terms-and-Conditions/Terms-e-Document.aspx>. Attention is drawn to the limitation of liability, indemnification and jurisdiction issues defined therein. Any holder of this document is advised that information contained hereon reflects the Company's findings at the time of its intervention only and within the limits of Client's instructions, if any. The Company's sole responsibility is to its Client and this document does not exonerate parties to a transaction from exercising all their rights and obligations under the transaction documents. This document cannot be reproduced except in full, without prior written approval of the Company. Any unauthorized alteration, forgery or falsification of the content or appearance of this document is unlawful and offenders may be prosecuted to the fullest extent of the law. Unless otherwise stated the results shown in this test report refer only to the sample(s) tested.

測試報告

Test Report

號碼(No.) : CY/2014/B0038 日期(Date) : 2014/11/12 頁數(Page): 10 of 12

盛進貿易股份有限公司

SHENG CHIN TRADING CO., LTD.

台北市開封街2段200號

NO. 20, SEC. 2, KAI FONG ST., TAIPEI, TAIWAN, R. O. C.



測試項目 (Test Items)	單位 (Unit)	測試方法 (Method)	方法偵測 極限值 (MDL)	結果 (Result)
				No.1
鄰-二甲苯 / o-Xylene (CAS No.: 95-47-6)	mg/kg	參考US EPA 5021方法, 以氣相層析/質譜儀檢測。 / With reference to US EPA 5021 method. Analysis was performed by GC/MS.	1	n.d.
間,對-二甲苯 / m,p-Xylene (CAS No.: 108-38-3, 106-42-3)	mg/kg	參考US EPA 5021方法, 以氣相層析/質譜儀檢測。 / With reference to US EPA 5021 method. Analysis was performed by GC/MS.	1	n.d.
對-異丙基甲苯 / p-Isopropyltoluene (CAS No.: 99-87-6)	mg/kg	參考US EPA 5021方法, 以氣相層析/質譜儀檢測。 / With reference to US EPA 5021 method. Analysis was performed by GC/MS.	1	n.d.
2-甲基丙基苯 / sec-Butylbenzene (CAS No.: 135-98-8)	mg/kg	參考US EPA 5021方法, 以氣相層析/質譜儀檢測。 / With reference to US EPA 5021 method. Analysis was performed by GC/MS.	1	n.d.
苯乙烯 / Styrene (CAS No.: 100-42-5)	mg/kg	參考US EPA 5021方法, 以氣相層析/質譜儀檢測。 / With reference to US EPA 5021 method. Analysis was performed by GC/MS.	1	n.d.
2,2-二甲基乙基苯 / 2,2-tert-Butylbenzene (CAS No.: 98-06-6)	mg/kg	參考US EPA 5021方法, 以氣相層析/質譜儀檢測。 / With reference to US EPA 5021 method. Analysis was performed by GC/MS.	1	n.d.
四氯乙烯 / Tetrachloroethene (CAS No.: 127-18-4)	mg/kg	參考US EPA 5021方法, 以氣相層析/質譜儀檢測。 / With reference to US EPA 5021 method. Analysis was performed by GC/MS.	1	n.d.

This document is issued by the Company subject to its General Conditions of Service printed overleaf, available on request or accessible at <http://www.sgs.com/en/Terms-and-Conditions.aspx> and, for electronic format documents, subject to Terms and Conditions for Electronic Documents at <http://www.sgs.com/en/Terms-and-Conditions/Terms-e-Documents.aspx>. Attention is drawn to the limitation of liability, indemnification and jurisdiction issues defined therein. Any holder of this document is advised that information contained hereon reflects the Company's findings at the time of its intervention only and within the limits of Client's instructions, if any. The Company's sole responsibility is to its Client and this document does not exonerate parties to a transaction from exercising all their rights and obligations under the transaction documents. This document cannot be reproduced except in full, without prior written approval of the Company. Any unauthorized alteration, forgery or falsification of the content or appearance of this document is unlawful and offenders may be prosecuted to the fullest extent of the law. Unless otherwise stated the results shown in this test report refer only to the sample(s) tested.

三氯一氟甲烷 / Trichlorofluoromethane (CAS No.: 75-69-4)	mg/kg	參考US EPA 5021方法，以氣相層析/質譜儀檢測。 / With reference to US EPA 5021 method. Analysis was performed by GC/MS.	1	n.d.
氯乙烯 / Vinyl chloride (CAS No.: 75-01-1)	mg/kg	參考US EPA 5021方法，以氣相層析/質譜儀檢測。 / With reference to US EPA 5021 method. Analysis was performed by GC/MS.	1	n.d.
三氯甲烷 / Trichloromethane (CAS No.: 67-66-3)	mg/kg	參考US EPA 5021方法，以氣相層析/質譜儀檢測。 / With reference to US EPA 5021 method. Analysis was performed by GC/MS.	1	n.d.

備註(Note)：

1. mg/kg = ppm ; 0.1wt% = 1000ppm
2. n.d. = Not Detected (未檢出)
3. MDL = Method Detection Limit (方法偵測極限值)

This document is issued by the Company subject to its General Conditions of Service printed overleaf, available on request or accessible at <http://www.sgs.com/en/Terms-and-Conditions.aspx> and, for electronic format documents, subject to Terms and Conditions for Electronic Documents at <http://www.sgs.com/en/Terms-and-Conditions/Terms-e-Documents.aspx>. Attention is drawn to the limitation of liability, indemnification and jurisdiction issues defined therein. Any holder of this document is advised that information contained hereon reflects the Company's findings at the time of its intervention only and within the limits of Client's instructions, if any. The Company's sole responsibility is to its Client and this document does not exonerate parties to a transaction from exercising all their rights and obligations under the transaction documents. This document cannot be reproduced except in full, without prior written approval of the Company. Any unauthorized alteration, forgery or falsification of the content or appearance of this document is unlawful and offenders may be prosecuted to the fullest extent of the law. Unless otherwise stated the results shown in this test report refer only to the sample(s) tested.

測試報告

Test Report

號碼(No.) : CY/2014/B0038

日期(Date) : 2014/11/12 頁數(Page): 12 of 12

盛進貿易股份有限公司

SHENG CHIN TRADING CO., LTD.

台北市開封街2段26號

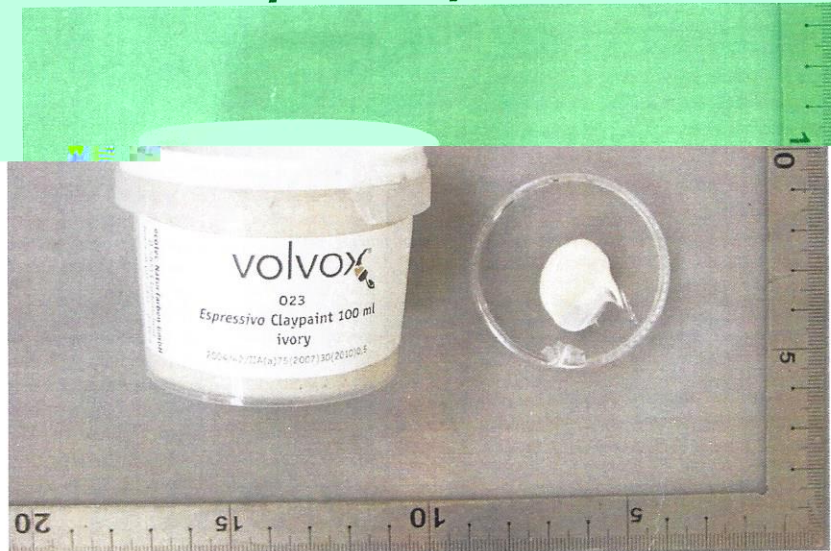
NO. 26, SEC. 2, KAI FONG ST., TAIPEI, TAIWAN, R. O. C.



* 照片中如有箭頭標示，則表示為實際檢測之樣品/部位。*

(The tested sample / part is marked by an arrow if it's shown on the photo.)

CY/2014/B0038



** 報告結尾 (End of Report) **

This document is issued by the Company subject to its General Conditions of Service printed overleaf, available on request or accessible at <http://www.sgs.com/en/Terms-and-Conditions.aspx> and, for electronic format documents, subject to Terms and Conditions for Electronic Documents at <http://www.sgs.com/en/Terms-and-Conditions/Terms-e-Document.aspx>. Attention is drawn to the limitation of liability, indemnification and jurisdiction issues defined therein. Any holder of this document is advised that information contained hereon reflects the Company's findings at the time of its intervention only and within the limits of Client's instructions, if any. The Company's sole responsibility is to its Client and this document does not exonerate parties to a transaction from exercising all their rights and obligations under the transaction documents. This document cannot be reproduced except in full, without prior written approval of the Company. Any unauthorized alteration, forgery or falsification of the content or appearance of this document is unlawful and offenders may be prosecuted to the fullest extent of the law. Unless otherwise stated the results shown in this test report refer only to the sample(s) tested.